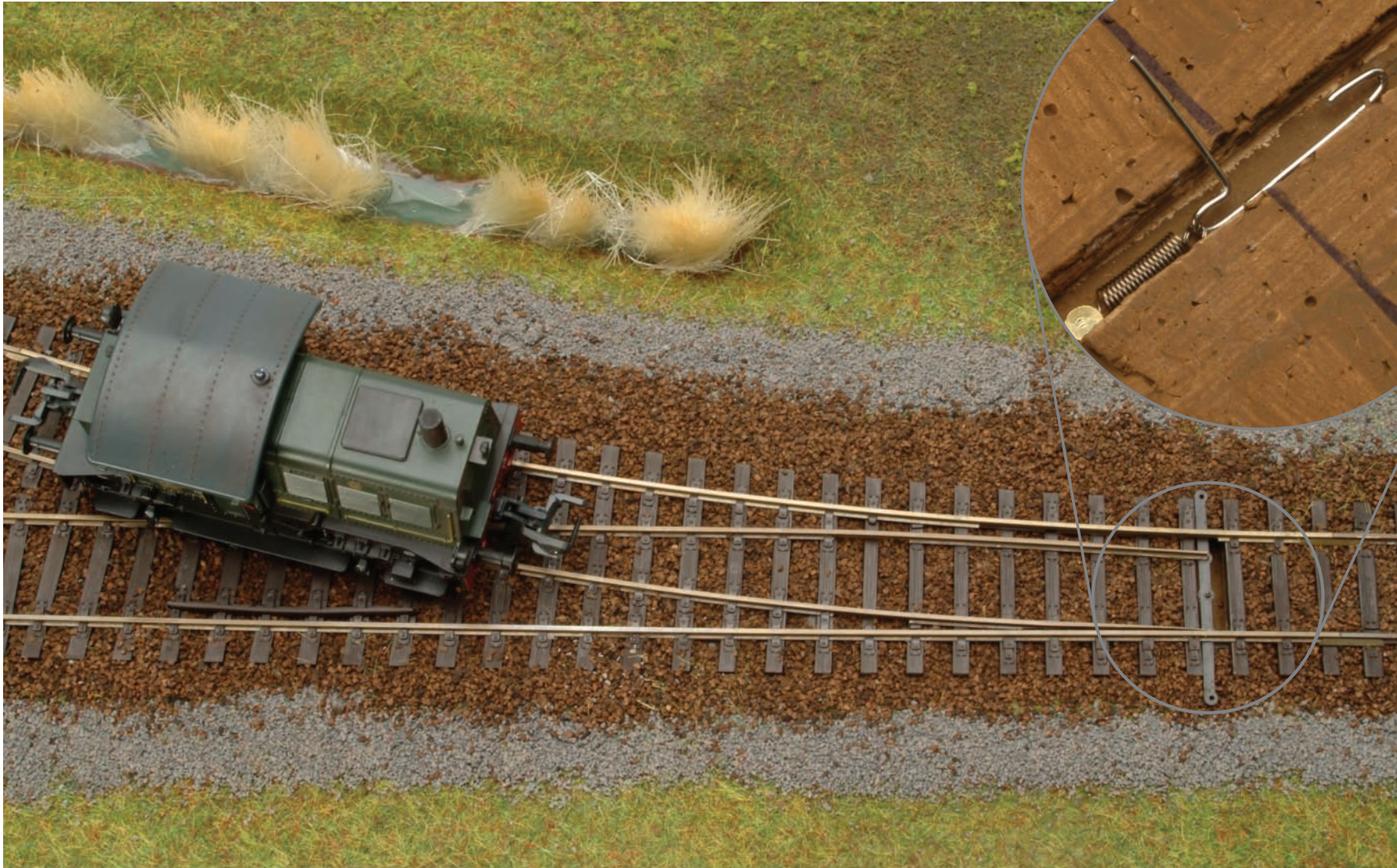


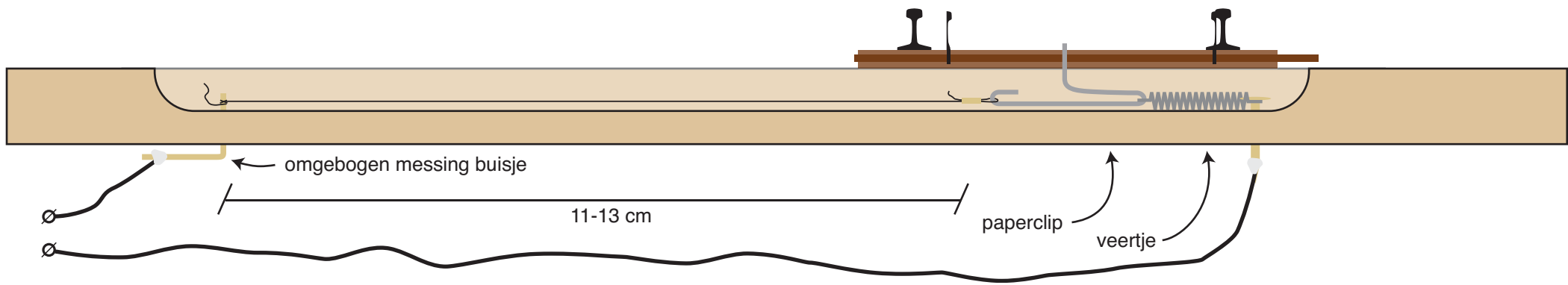


## Geheugenmetaal als wisselaandrijving



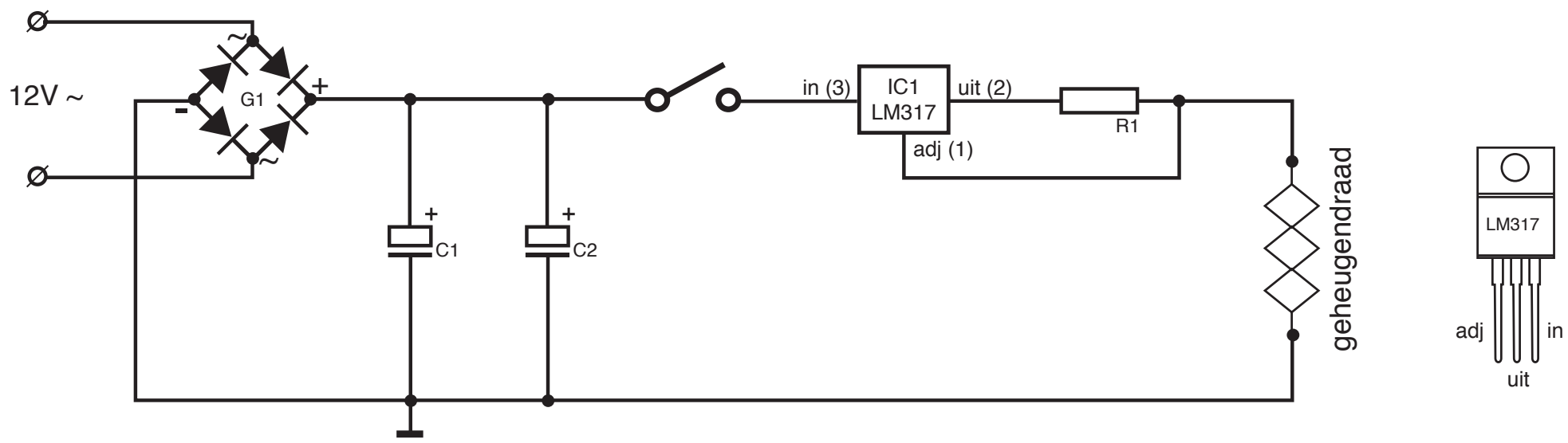


## Dwarsdoorsnede van de aandrijving

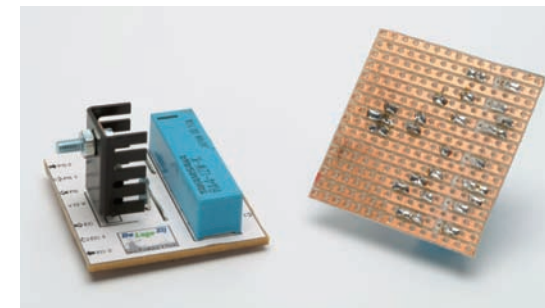
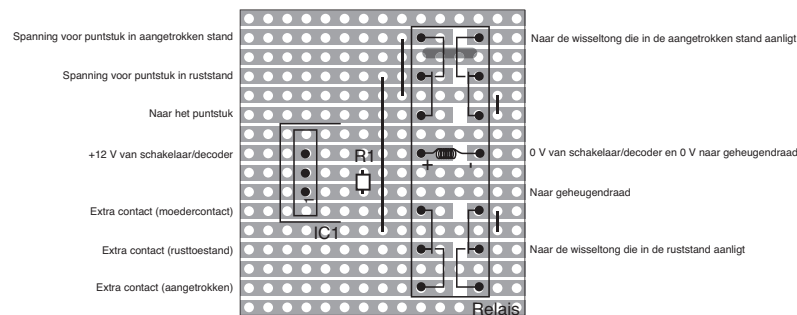
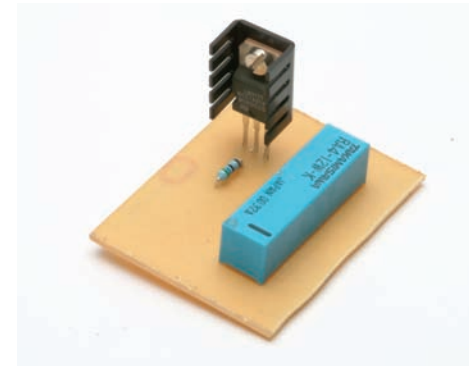
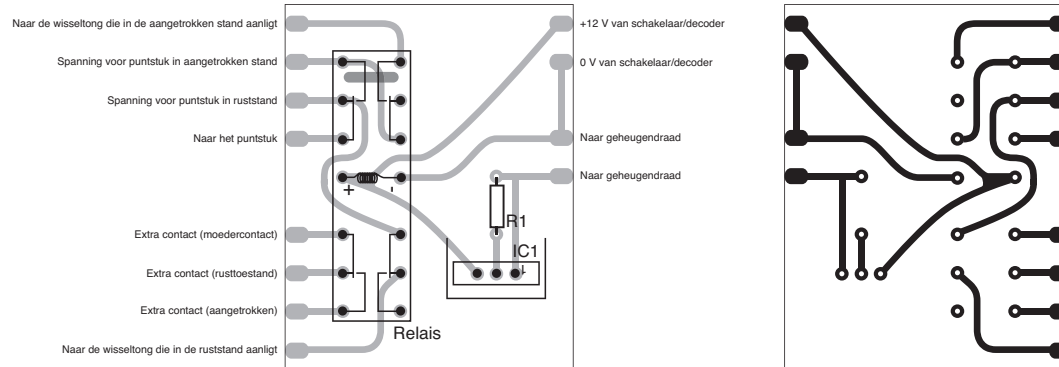




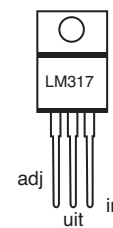
# Elektrische aansturing



## De schakeling op een printplaat



componenten	
IC1	LM317T (TO220)
R1	5,6 Ohm, 1/2 W
Relais	RA4-12W-K
Koellichaam LM317	





## Aansluitvoorbeeld

