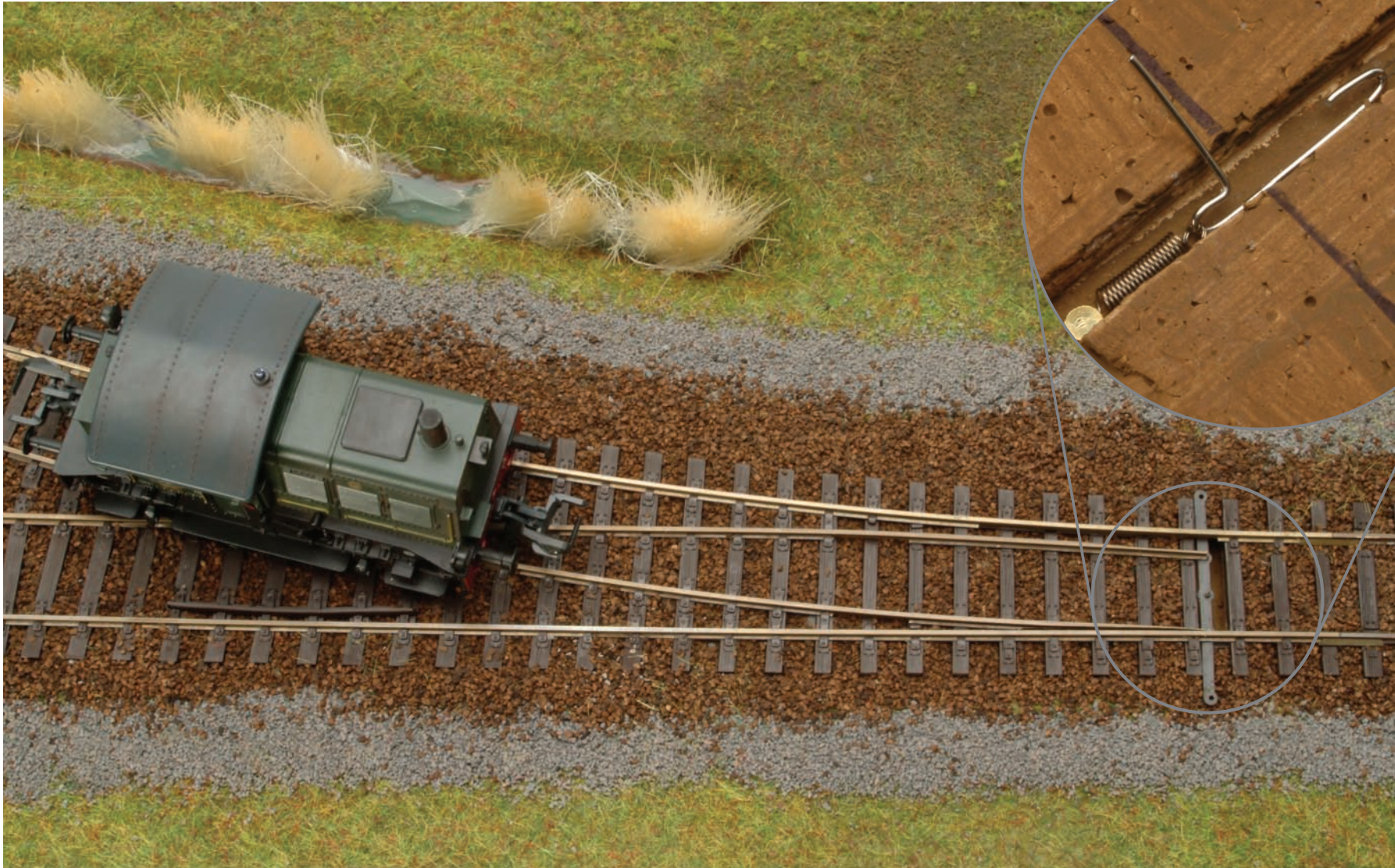


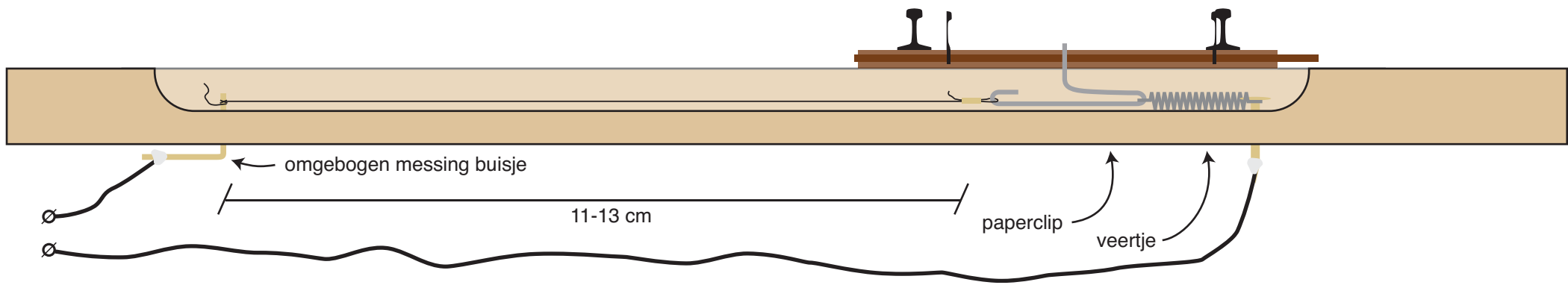


Geheugenmetaal als wisselaandrijving



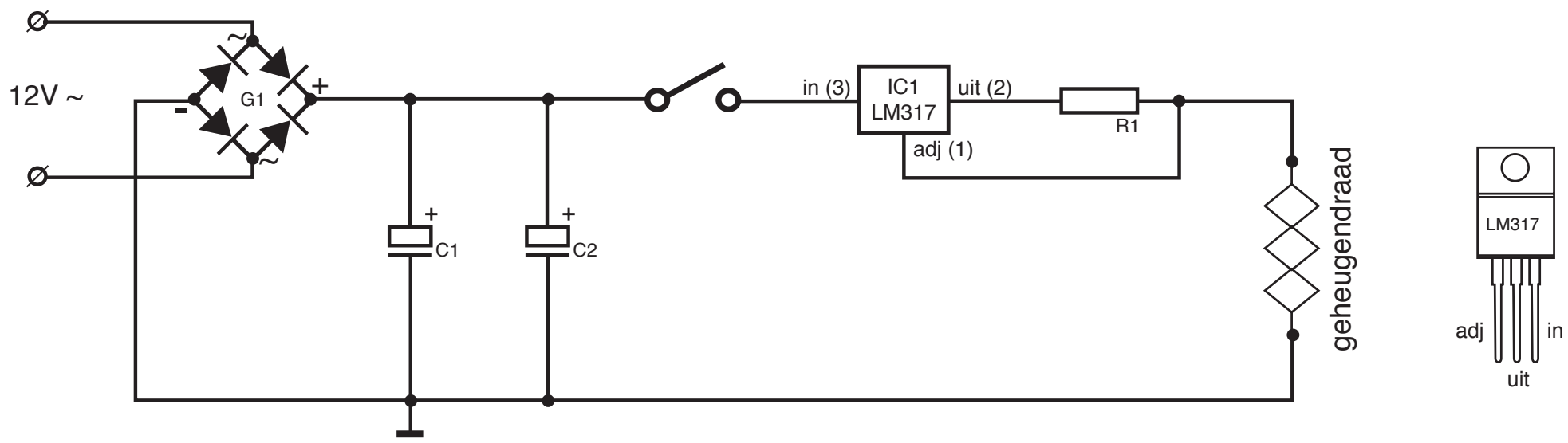


Dwarsdoorsnede van de aandrijving

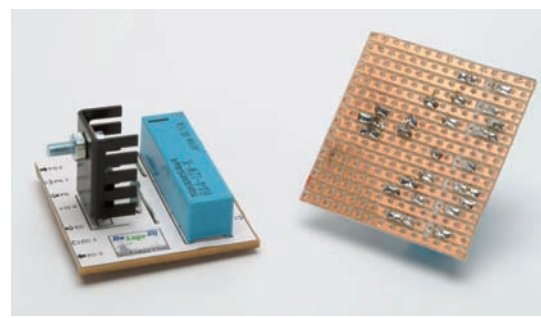
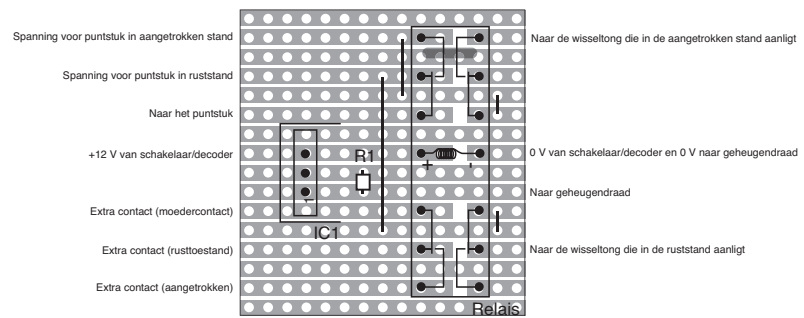
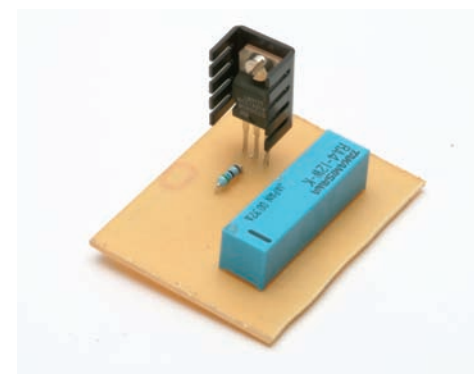
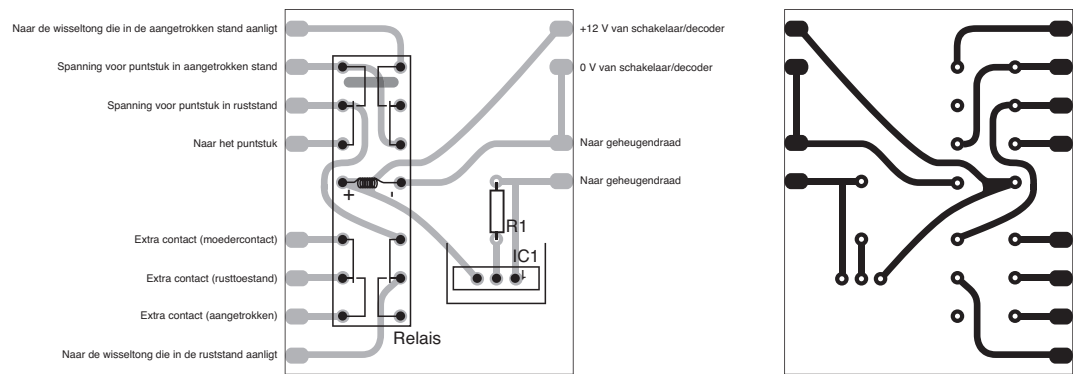




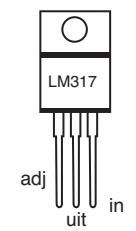
Elektrische aansturing



De schakeling op een printplaat



componenten	
IC1	LM317T (TO220)
R1	5,6 Ohm, 1/2 W
Relais	RA4-12W-K
Koellichaam LM317	





Aansluitvoorbeeld

